

INSTALLATION INSTRUCTIONS

KWYET ATLA PENDANT WITH P1FCX HANGING SYSTEM

These instructions cover the ATLA luminaire with the following options:

SERIES	HANGING SYSTEM	SIZE	LIGHT SOURCE	CONTROL	WIRE DIAGRAM
AA2 AA3	P1FCX: PENDANT WITH FLAT CANOPY, SINGLE WHITE (P1FCFW) OR BLACK (P1FCB) POWER CORD; MOUNTS TO OCL RECESSED J-BOX (PROVIDED BY OCL)	6"	STATIC WHITE	DM1: 0-10V DIM 1%	WIRE DIAGRAM ON PAGE 10

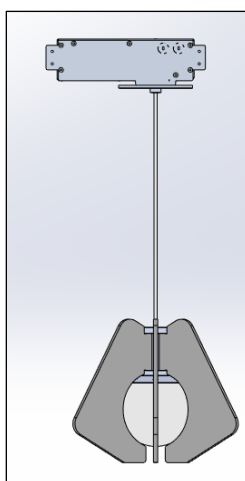


FIG. 1 – AA2-P1FCX-6-XX-GW-XXX-XXX-LEDX_XXK-UNV-XXX-DM1-XXX (AS SHOWN)

GENERAL NOTES:

- PLEASE COMPLETELY READ THE INSTALLATION INSTRUCTIONS BEFORE STARTING INSTALLATION.
- TURN OFF POWER TO CIRCUIT FIXTURE WHILE IT IS BEING INSTALLED.
- INSTALL IN ACCORDANCE WITH ALL LOCAL, STATE AND NATIONAL CODES CONSULT WITH A QUALIFIED ELECTRICIAN FOR PROPER INSTALLATION.
 -CE PRODUIT DOIT ÊTRE INSTALLÉ SELON LE CODE D'INSTALLATION PERTINENT, PAR UNE PERSONNE QUI CONNAÎT. CONSULTER UNE ÉLECTRICIEN QUALIFIÉ POUR VOUS ASSURER QUE LES CONDUCTEURS DE LA DÉRIVATION SONT ADÉQUATS.
- CAREFULLY UNPACK ALL CONTENTS; SOME COMPONENTS MAY HAVE BEEN SHIPPED IN SEPARATE BOXES MOST FIXTURES ARE SHIPPED PARTIALLY ASSEMBLED. SOME UNASSEMBLY MAY BE REQUIRED FOR INSTALLATION.
- FIXTURE POWER CORD WIRES ARE LOW- VOLTAGE. DO NOT CONNECT TO LINE VOLTAGE OR DAMAGE TO THE FIXTURE WILL OCCUR AND WARRANTY WILL BE VOIDED.
- DO NOT LET THE ATLA LUMINAIRE HANG FREE UNTIL THE CORD IS PROPERLY SECURED.
- DUE TO A CHANGE IN NEC SECTION 410.69 EFFECTIVE IN 2022, THE COLOR PINK WILL BE USED IN PLACE OF GRAY FOR 0-10V CONTROL. NOTE THAT EXISTING SYSTEMS AND FIXTURES MANUFACTURED PRIOR TO 2022 MAY STILL USE GRAY WIRE AS AN UNGROUNDED CONDUCTOR FOR 0-10V CONTROL. CARE SHOULD BE TAKEN WHEN WORKING ON EXISTING SYSTEMS.

OCL Architectural Lighting

Phone: 314.863.1895
 Fax: 314.863.3278
www.occl.com

Table of Contents

GENERAL INFORMATION:	3
MOUNTING:	4
ATLA MOUNTING:	4
ATLA MOUNTING [HARD CEILING]:	4
ATLA MOUNTING [GRID CEILING]:	6
WIRE DIAGRAM:	10

XXX-P1FCX-LED-INSTALLATION-INSTRUCTIONS

GENERAL INFORMATION:

You will receive the following with each ATLA series pendant fixture:

1. REFLECTOR ASSEMBLY with CORD attached. (shown in FIG. 2)
2. ACRYLIC GLOBE. (shown in FIG. 3)
3. ACOUSTIC HOLDER ASSMEBLY (shown in FIG. 4)
4. ACOUSTIC FINS (shown in FIG. 5)
5. INSTALLATION INSTRUCTIONS (shown in FIG. 6) - Please completely read the install instructions before starting installation.
6. RED BAG (shown in FIG. 6) contains below following items:
 - a. CANOPY SUBASSEMBLY (as shown in FIG. 7)
 - b. STRAIN RELIEF (as shown in FIG. 8)

WARNING: Examine all components for any damage before beginning installation.

WARNING: This fixture should be installed by a licensed electrician only.

WARNING: Be careful not to scratch or damage any finished parts.

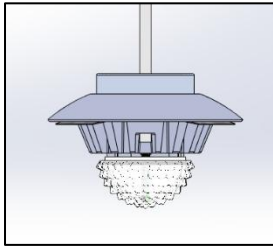


FIG.2 REFLECTOR ASSEMBLY
(PRE-ASSEMBLED)

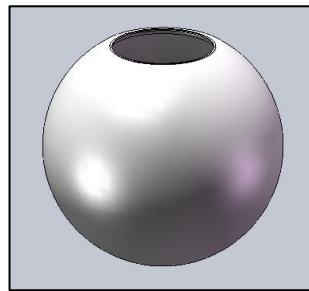


FIG.3 ACRYLIC GLOBE

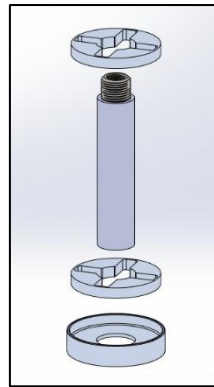


FIG.4 ACOUSTIC HOLDER
ASSEMBLY

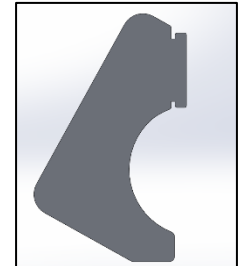


FIG.5 ACOUSTIC FIN

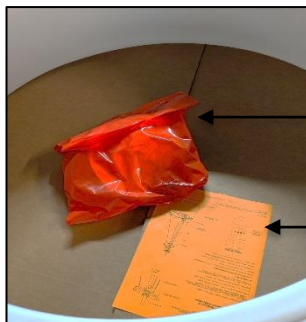


FIG.6 RED BAG AND
INSTALLATION INSTRUCTIONS

RED BAG
 INSTALLATION
 INSTRUCTIONS

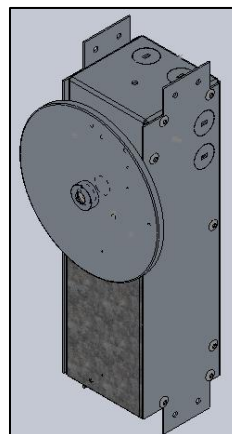


FIG. 7 - CANOPY SUBASSEMBLY

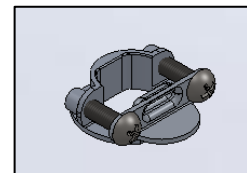


FIG. 8 - STRAIN RELIEF

OCL Architectural Lighting

Phone: 314.863.1895

Fax: 314.863.3278

www.ocl.com

XXX-P1FCX-LED-INSTALLATION-INSTRUCTIONS

MOUNTING:

ATLA MOUNTING:

1. Unscrew CANOPY FINIAL and remove the CANOPY PLATE out of J-BOX as shown in FIG 9.
2. Remove the SCREWS securing MOUNTING BRACKET ASSEMBLY, and slide MOUNTING BRACKET ASSEMBLY out of J-BOX as shown in FIG. 10.

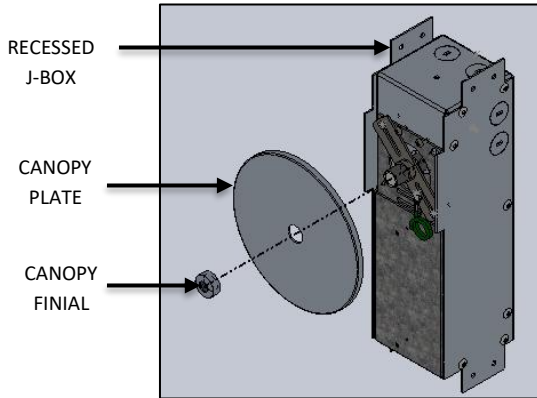


FIG. 9- FINIAL AND CANOPY DISASSEMBLY

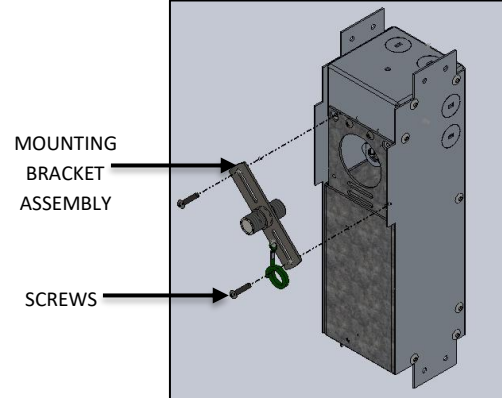


FIG. 10 - MOUNTING BRACKET DISASSEMBLY

NOTE:

For **ATLA MOUNTING [HARD CEILING]** see steps from 3 to 11,
For **ATLA MOUNTING [GRID CEILING]** see steps from 12 to 19.

ATLA MOUNTING [HARD CEILING]:

3. Remove the SCREWS securing DRIVER PLATE, and slide DRIVER PLATE out of J-BOX as shown in FIG. 11.
4. Attach RECESSED JUNCTION BOX to WALL STUD or CEILING JOIST at desired height and location before drywall is installed as shown below in FIG.12. Use appropriate anchor screws to secure to stud.
(**Make sure the front of J-BOX is flush with the surface of the STUD and the large end of the BOX should face downward when mounted in the wall**).
5. Remove the appropriate knock out for desired wire entrance location as shown in FIG. 13.

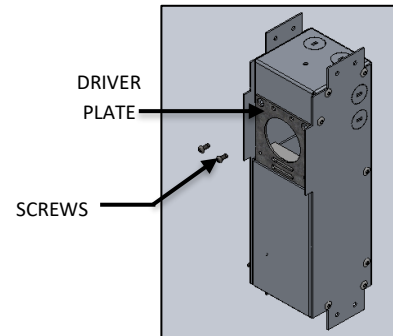


FIG. 11- DRIVER PLATE DISASSEMBLE

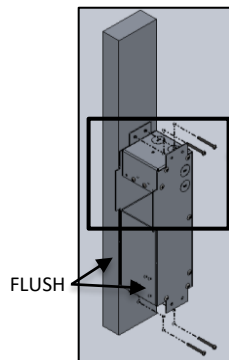


FIG. 12- J-BOX ASSEMBLY TO WALL

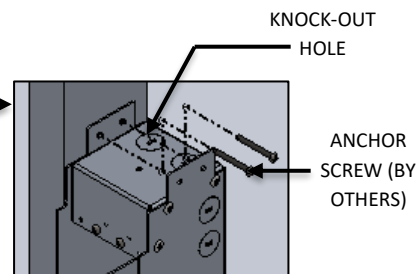


FIG. 13- DETAIL SHOWING KNOCK-OUT HOLE AND SCREWS

OCL Architectural Lighting

Phone: 314.863.1895
Fax: 314.863.3278

www.ocl.com

XXX-P1FCX-LED-INSTALLATION-INSTRUCTIONS

6. Attach appropriate 1/2" CONDUIT FITTING to knockouts and run building supply connections into the box. make sure to pull the wires out through the square opening as shown below in FIG. 14 & 15.

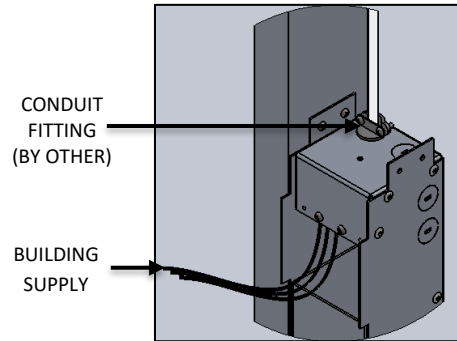


FIG. 14- DETAIL SHOWING
BUILDING SUPPLY AND
CONDUIT FITTING

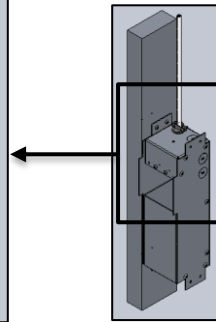


FIG. 15- CONDUIT
FITTING TO J-BOX
ASSEMBLY

7. Cut a SQUARE HOLE no larger than 3.375" x 3.625.
8. Attach the desired ceiling covering and finish accordingly as shown in FIG. 16.

Min Ceiling Thickness is .5"
Max Ceiling Thickness is 1.25"

9. Slide DRIVER PLATE into the box with the driver facing rearward as shown in FIG. 17. As you slide the plate in, make sure you pull the BUILDING SUPPLY connections through the large hole in the DRIVER PLATE and other wires will already be through center hole.
10. Make BUILDING SUPPLY wire connections and tuck them into the top section of the box leaving the DRIVER WIRES out as shown in FIG. 18. Make all wire connections in the inside the junction box (by others) in accordance with the NATIONAL ELECTRICAL CODE and all applicable LOCAL AND STATE CODES.

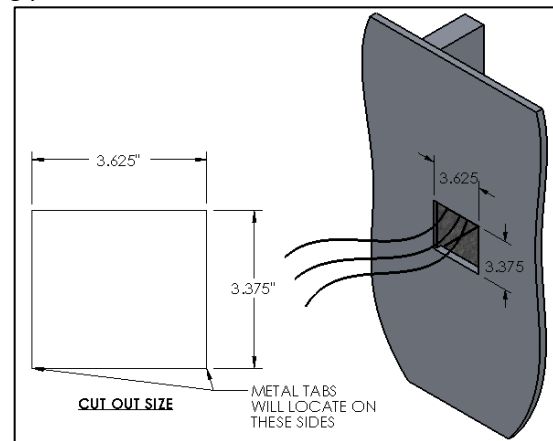


FIG. 16- J-BOX ASSEMBLY AND CEILING CUT OUT

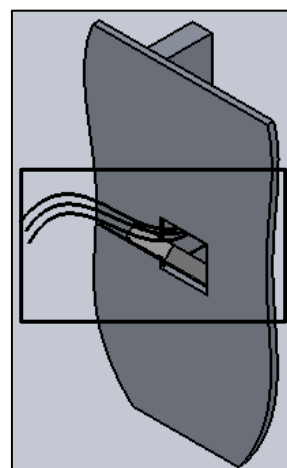


FIG. 17- DRIVER PLATE ASSEMBLY

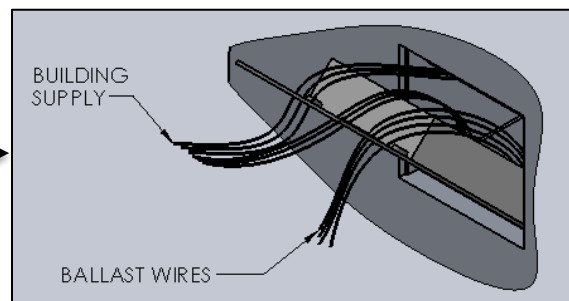


FIG. 18- DETAIL SHOWING BUILDING SUPPLY AND
DRIVER WIRE CONNECTION

OCL Architectural Lighting

Phone: 314.863.1895

Fax: 314.863.3278

www.ocl.com

XXX-P1FCX-LED-INSTALLATION-INSTRUCTIONS

11. Reattach DRIVER PLATE with the screws provided as shown in FIG. 19 and 20.

CAUTION: Make sure **FIXTURE WIRES** from **DRIVER** as shown in FIG.18 are capped while waiting to install fixture.

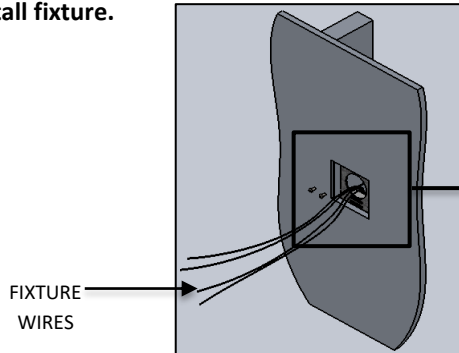


FIG. 19 DRIVER PLATE RE-ASSEMBLED

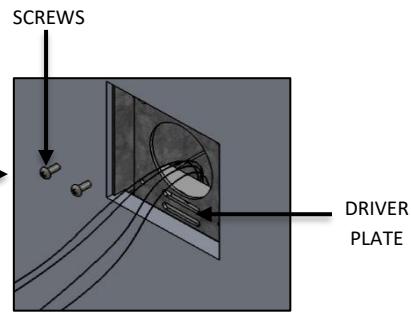


FIG. 20 DETAIL SHOWING SCREW INSTALLATION

ATLA MOUNTING [GRID CEILING]:

12. Cut a 3.375" high and 3.625" Wide Hole into the CEILING TILE and insert the TILE into the desired location as shown below in FIG. 21.
13. Remove the DRIVER PLATE by removing the Two Screws and slide out as shown below in FIG. 22.

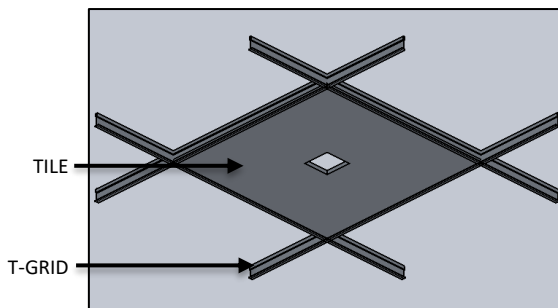


FIG. 21-TILE INSTALLATION

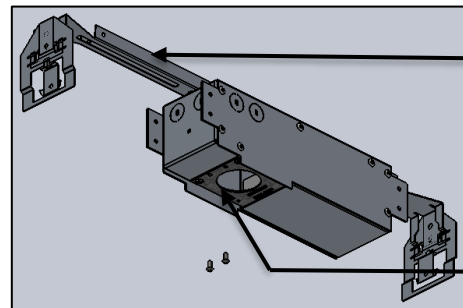


FIG. 22- DRIVER PLATE DISASSEMBLE

14. Remove the desired knock out and attach appropriate 1/2" CONDUIT FITTING and pull the BUILDING SUPPLY wires through the opening as shown below in FIG. 23.
15. From an adjacent opening attach the J-BOX to the GRID with the SUSPENSION BARS [BY OTHER] attached on the top. (Position of the J-BOX can be moved by loosening the top 2 SCREWS) as shown below in FIG.24.
16. Center the flanges into the Square Hole, the surface of the J-BOX should almost rest onto the CEILING TILE.

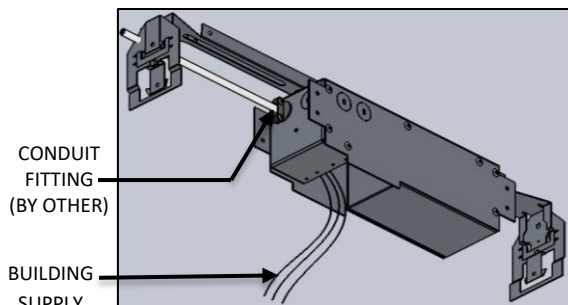


FIG. 23- CONDUIT FITTING TO J-BOX ASSEMBLY

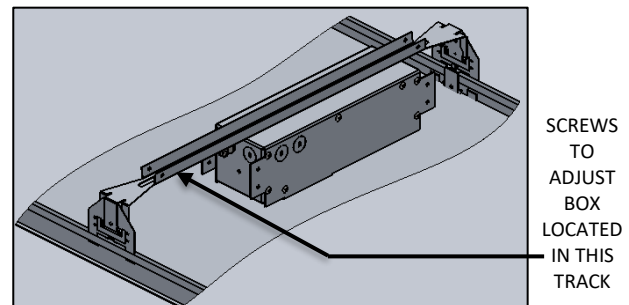


FIG. 24- J-BOX ASSEMBLY ORIENTATATION

OCL Architectural Lighting

Phone: 314.863.1895

Fax: 314.863.3278

www.ocl.com

XXX-P1FCX-LED-INSTALLATION-INSTRUCTIONS

17. Slide DRIVER PLATE into the box with the DRIVER facing up. As you slide the plate into position, make sure you pull the BUILDING SUPPLY connections through the large hole in the DRIVER PLATE as shown below in FIG. 25 and other wires will already be through the center hole.

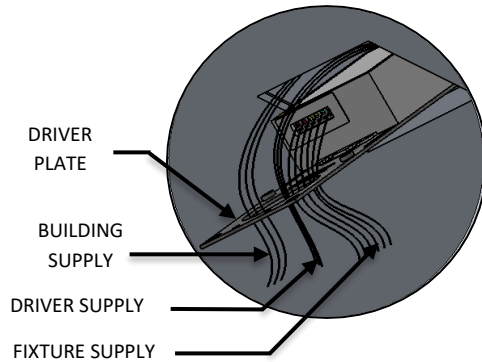


FIG. 25- DETAIL SHOWING BUILDING SUPPLY AND DRIVER WIRE

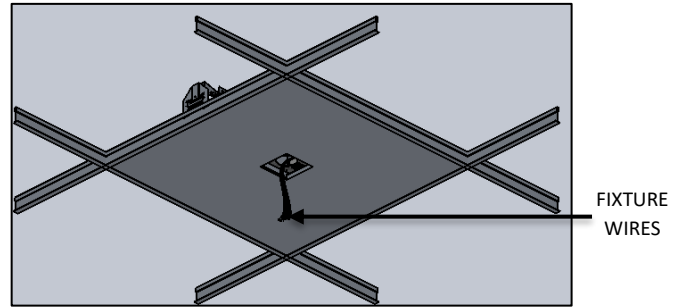


FIG. 26- ASSEMBLED VIEW SHOWING RECESSED J-BOX TO THE CEILING

18. Secure the DRIVER PLATE with the screws provided.
19. Make BUILDING SUPPLY WIRE connections and tuck them into the small section of the J-BOX. Make all wire connections in the inside the junction box (by others) in accordance with the NATIONAL ELECTRICAL CODE and all applicable LOCAL AND STATE CODES.

CAUTION: Make sure FIXTURE WIRES from DRIVER are capped while waiting to install fixture as shown in FIG. 26.

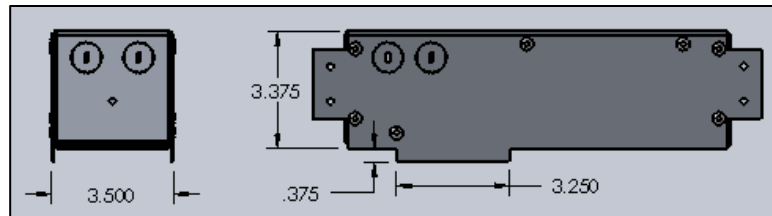


FIG. 27 -INSTALLED JUNCTION BOX

XXX-P1FCX-LED-INSTALLATION-INSTRUCTIONS

20. Unscrew and fully remove the THREADED COLLAR from the THREADED NIPPLE and CORD as show in FIG. 28.
21. Feed the cord through the ACOUSTIC PANEL HOLDER ASSEMBLY in the order shown in FIG. 29. Ensure the deeper recess of the UNTHREADED COLLAR is facing up and will hold the ACOUSTIC HOLDER. Ensure THREADED COLLAR recess is facing down.
22. Screw the STEM onto the THREADED NIPPLE of the REFLECTOR ASSEMBLY. Be careful not to scratch the finish with the ACOUSTIC HOLDERS.

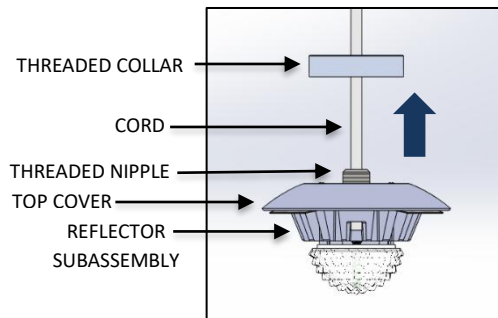


FIG. 28 THREADED COLLAR
DISSASSEMBLY

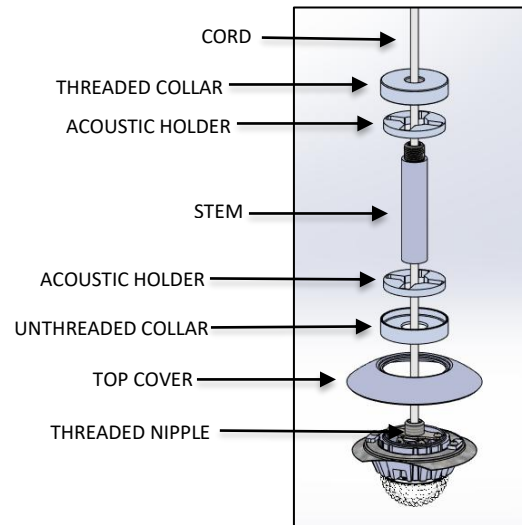


FIG. 29 ACOUSTIC PANEL HOLDER ASSEMBLY

23. INSERT CORD into CANOPY FINIAL (THREADS UP), CANOPY and MOUNTING BRACKET as shown in FIG. 30 and adjust fixture drop to desired height.

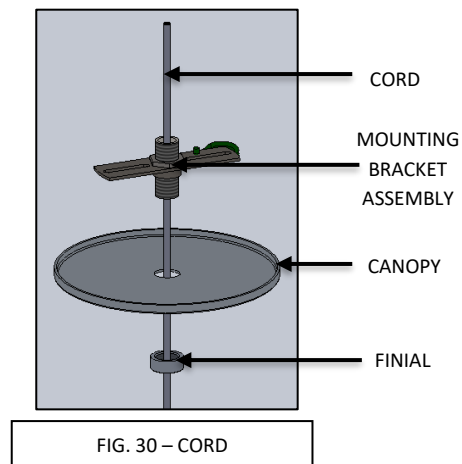


FIG. 30 - CORD

OCL Architectural Lighting

Phone: 314.863.1895

Fax: 314.863.3278

www.ocl.com

XXX-P1FCX-LED-INSTALLATION-INSTRUCTIONS

24. Mark CORD with marker above the all-thread and trim off excess cord leaving minimum of 8" past the top of the all-thread as shown below in fig. 31.

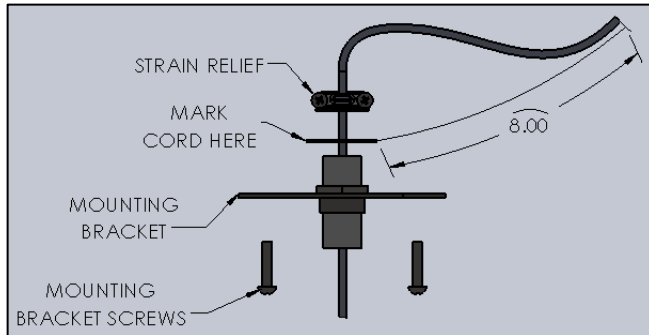


FIG. 31 – DETAIL B (SHOWING CORD TRIM INFORMATION)

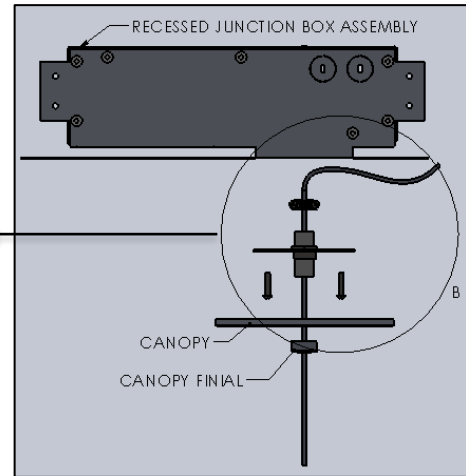


FIG. 32 – CORD INSTALLATION TO J-BOX

25. Insert CORD through the STRAIN RELIEF and tighten two SCREWS on the STRAIN RELIEF above the all-thread where marked. If screws are not properly tightened CORD could slip; through the STRAIN RELIEF, causing the fixture to fall. see detail as shown in FIG.32.

Be sure to leave a minimum of 8.00" past the strain relief to allow for wire connections.

WARNING:



Do not let the ATLA LUMINAIRE hang free until the CORD is secured and evenly tensioned.

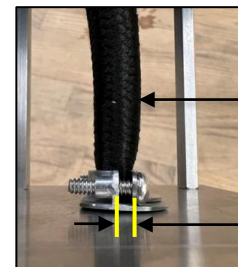


FIG. 33 – STRAIN RELIEF WITH CORD INSERTED

26. Make all wire connections between DRIVER and FIXTURE CORD, all wire connections in the inside the junction box in accordance with the national electrical code and all applicable local and state codes. See WIRE DIAGRAM on page 10 as shown in FIG.34.
27. Raise MOUNTING BRACKET ASSEMBLY up to RECESSED JUNCTION BOX, and secure with the MOUNTING BRACKET SCREWS as shown in FIG.36.

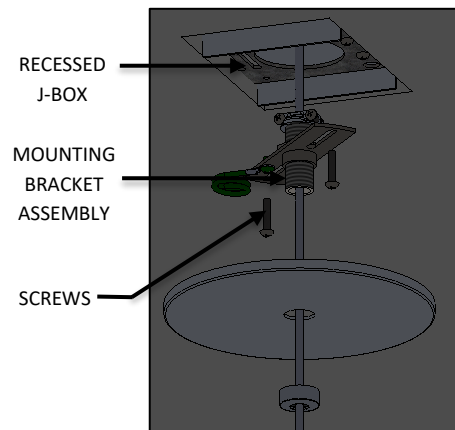


FIG. 34 – FINIAL ASSEMBLY

OCL Architectural Lighting

Phone: 314.863.1895

Fax: 314.863.3278

www.ocllighting.com

XXX-P1FCX-LED-INSTALLATION-INSTRUCTIONS

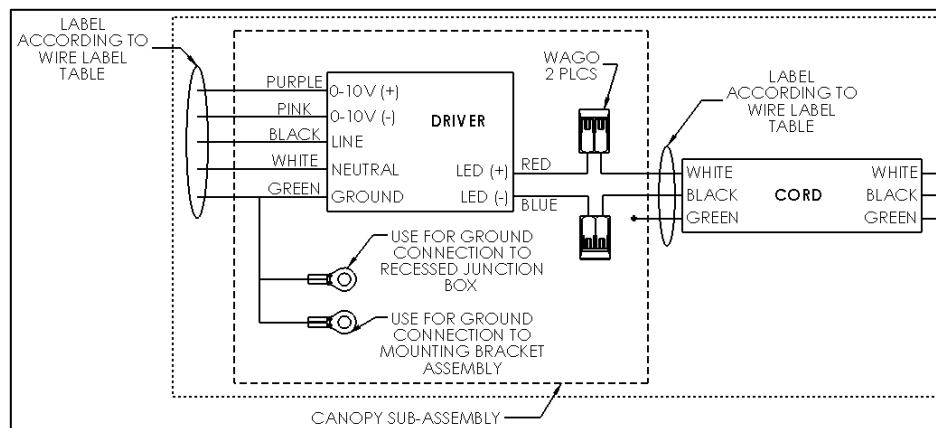
28. Make wire connections between Building Supply, Driver and fixture cord inside the junction box in accordance with the national electrical code and all applicable local and state codes. See WIRE DIAGRAM and WIRE LABEL TABLE shown in FIG. 33 and FIG. 34 for wire connections

SERIES	HANGING SYSTEM	SIZE	LIGHT SOURCE	CONTROL	WIRE DIAGRAM
AA1 (ATLA)	P1FCX: PENDANT WITH FLAT CANOPY, SINGLE WHITE (P1FCFW) OR BLACK (P1FCB) POWER CORD; MOUNTS TO OCL RECESSED J-BOX (PROVIDED BY OCL)	6" 8" 10"	STATIC WHITE	DM1: 0-10V DIM 1%	WIRE DIAGRAM ON PAGE 10

WIRE DIAGRAM:

WIRE LABEL TABLE		
CONTROL	WIRE COLOR	LABEL
ALL	WHITE(CORD)	LED(+)
ALL	BLACK(CORD)	LED(-)
ALL	BLACK(DRIVER)	LINE VOLTAGE
ALL	WHITE(DRIVER)	NEUTRAL
ALL	GREEN(DRIVER)	GROUND
ALL	RED(DRIVER)	LED(+)
ALL	BLUE(DRIVER)	LED(-)
DM1	PURPLE	0-10V (+)
DM1	PINK	0-10V (-)

FIG. 35 – WIRE LABEL TABLE



SEE GENERAL NOTE 7 ON PAGE 1

FIG. 36 – WIRE DIAGRAM

OCL Architectural Lighting

Phone: 314.863.1895

Fax: 314.863.3278

www.ocl.com

XXX-P1FCX-LED-INSTALLATION-INSTRUCTIONS

29. Raise CANOPY PLATE and secure to ceiling by threading the FINIAL to the NIPPLE (available in MOUNTING BRACKET ASSEMBLY) as shown below in FIG. 37.

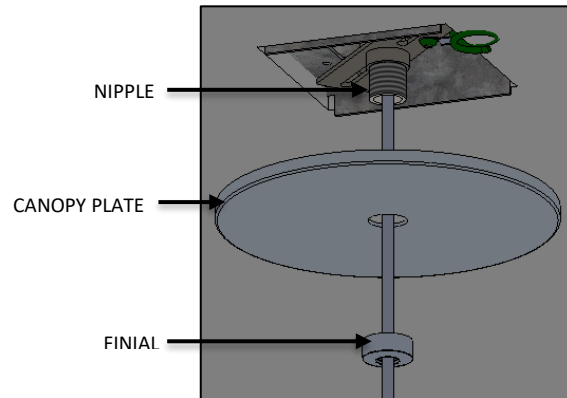


FIG. 37 – FINIAL ASSEMBLY

30. Lift TOP COVER from the REFLECTOR ASSEMBLY as shown below in FIG. 38. Be careful not to scratch the finish.

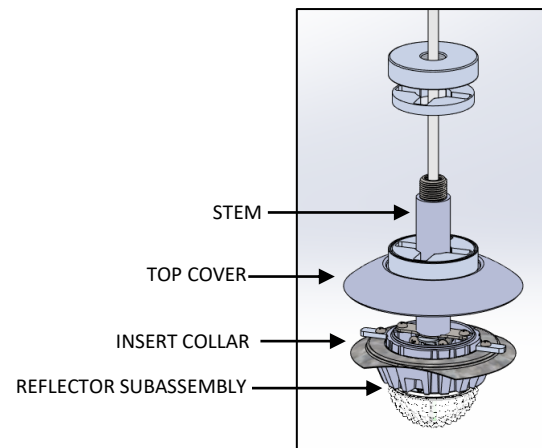


FIG. 38 – REFLECTOR DISSASSEMBLY

OCL Architectural Lighting

Phone: 314.863.1895

Fax: 314.863.3278

www.ocl.com

XXX-P1FCX-LED-INSTALLATION-INSTRUCTIONS

31. Tilt and insert the REFLECTOR ASSEMBLY through the ACRYLIC GLOBE as shown in FIG. 39.
32. Make sure that ACRYLIC SHADE is properly seated onto the INSERT COLLAR and then slide the TOP COVER UNTHREADED COLLAR and the bottom ACOUSTIC HOLDER back down as shown below in FIG. 40.

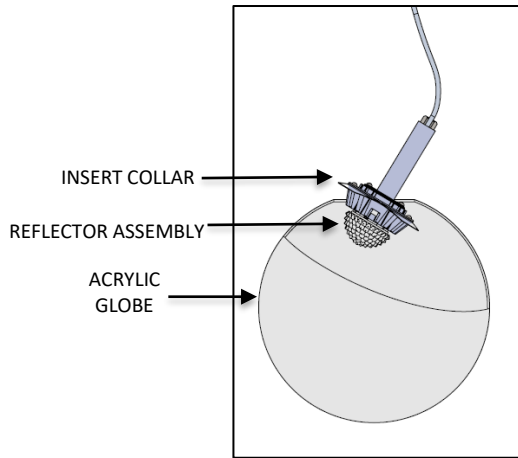


FIG. 39 – ACRYLIC GLOBE INSTALLATION

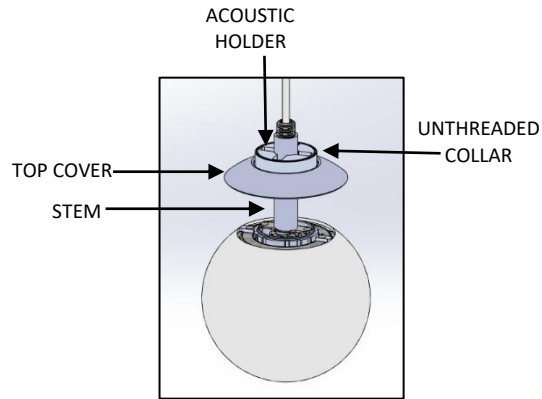


FIG. 40 – ACOUSTIC HOLDER INSTALLATION

33. Raise the upper ACOUSTIC HOLDER and THREADED COLLAR and insert ACOUSTIC FINS into lower ACOUSTIC HOLDER as shown in FIG. 41.
34. With all ACOUSTIC FINS slotted into the lower ACOUSTIC HOLDER, insert the ACOUSTIC FIN tabs into the upper ACOUSTIC HOLDER as shown in FIG. 42. Ensure all fins are properly slotted into place and then screw on THREADED COLLAR onto STEM.

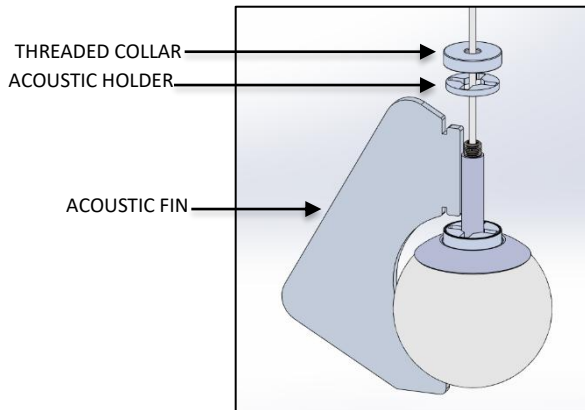


FIG. 41 – ACOUSTIC FIN INSTALLATION

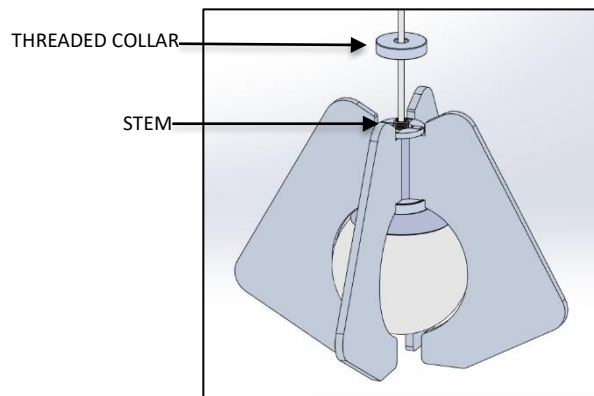


FIG. 42 – ACOUSTIC FIN INSTALLATION

XXX-P1FCX-LED-INSTALLATION-INSTRUCTIONS

35. Restore power to circuit the ATLA series pendant is connected to.
 - a. Test to ensure that the luminaire turns on after power is restored.
 - b. Contact OCL for any luminaire troubleshooting if a problem occurs.

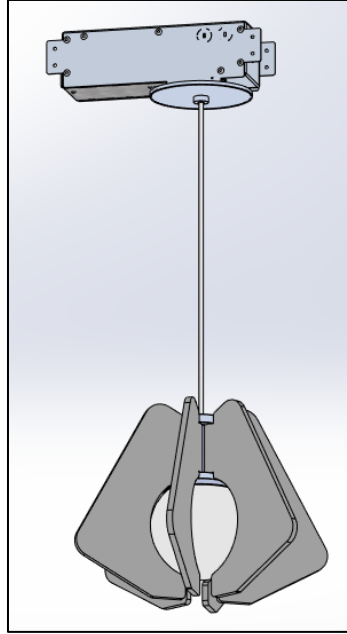


FIG. 43 - COMPLETED INSTALLATION OF ATLA PENDANT
WITH P1FCX HANGING SYSTEM
AA2-P1FCX-6-GW-XXX-XXX-LEDX_XXK-UNV-XXX-DM1-
XXX